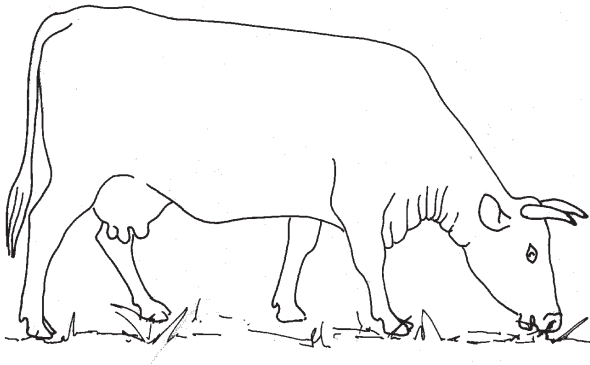


How to estimate the age of cattle

– Jenny Turton –

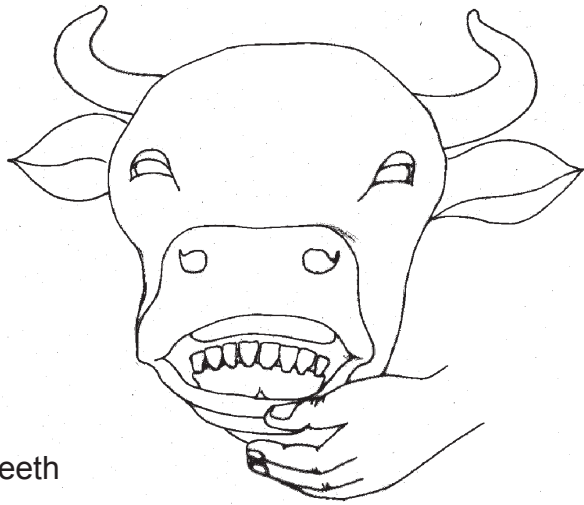


***You can estimate the age of cattle by looking at the teeth.
Old animals with worn teeth cannot eat well and will
lose condition.***

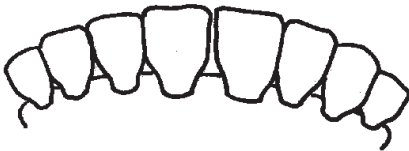


**agriculture,
forestry & fisheries**

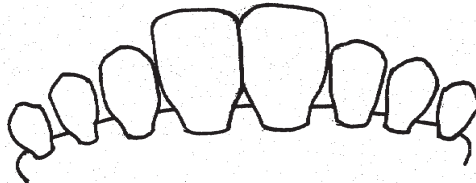
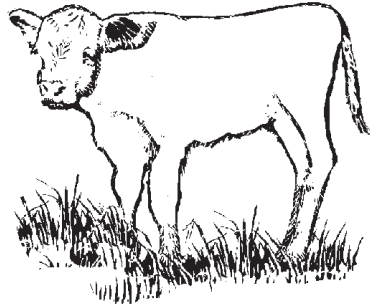
Department:
Agriculture, Forestry and Fisheries
REPUBLIC OF SOUTH AFRICA



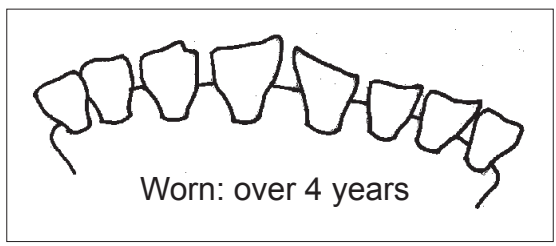
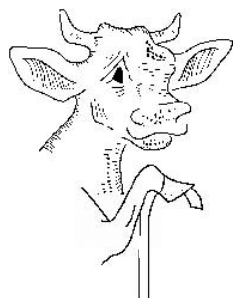
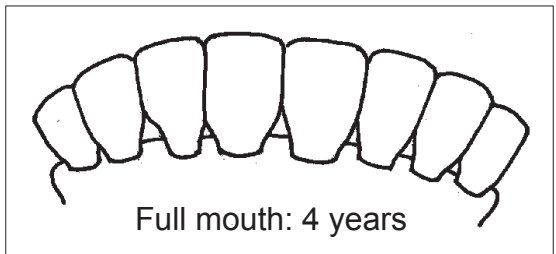
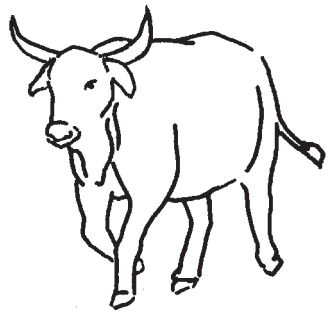
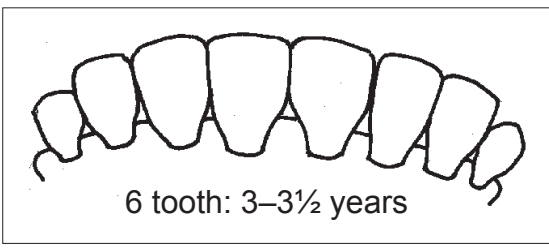
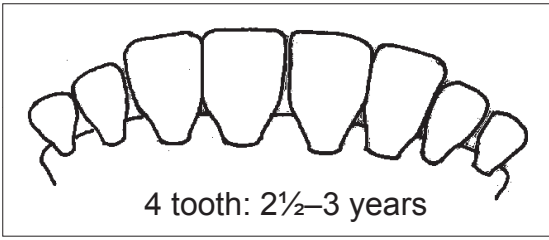
How to check the teeth



Baby teeth (milk teeth):
under 2 years of age



2 tooth: 2-2½ years





For further information contact

Animal Health for Developing Farmers
Onderstepoort Veterinary Institute
Private Bag X05
Onderstepoort
0110
Tel: 012 529 9158

2009

2001 First print

Compiled by

Directorate Agricultural Information Services
Department of Agriculture, Forestry and Fisheries

In cooperation with

ARC-Onderstepoort Veterinary Institute

Printed and published by

Department of Agriculture, Forestry and Fisheries

Obtainable from

Resource Centre, Directorate Agricultural Information Services
Private Bag X144, Pretoria, 0001 South Africa

Also available on the web at

www.DAFF.gov.za